

4.

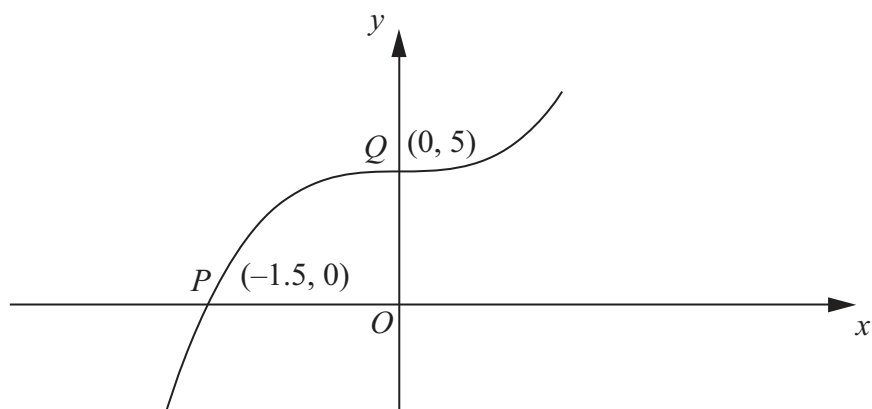


Figure 2

Figure 2 shows part of the curve with equation $y = f(x)$
 The curve passes through the points $P(-1.5, 0)$ and $Q(0, 5)$ as shown.

On separate diagrams, sketch the curve with equation

(a) $y = |f(x)|$ **(2)**

(b) $y = f(|x|)$ **(2)**

(c) $y = 2f(3x)$ **(3)**

Indicate clearly on each sketch the coordinates of the points at which the curve crosses or meets the axes.



Question 4 continued



Question 4 continued



Question 4 continued

Q4

(Total 7 marks)



Question 6 continued

Q6

(Total 14 marks)



